



**DISCOVER A GOLDMINE
OF OVER 80 AMENITIES
IN A 50-ACRE
INTEGRATED TOWNSHIP**

Feldspar • Gallium • Helio

#StrikeGold at North Bengaluru's Most Loved Residential Property

RERA REGISTRATION NO:

Feldspar: PRM/KA/RERA/1251/309/PR/210216/003909 | Helio: PRM/KA/RERA/1251/472/PR/190913/002889 | Gallium: PRM/KA/RERA/1251/472/PR/190427/002540

BRIGADE
EL DORADO

AEROSPACE PARK
BENGALURU NORTH



Artist's impression

Discover the finest treasures in El Dorado.

Presenting residential towers **Feldspar, Gallium & Helio.**

Once you have experienced it, you will agree the quality of life at Feldspar, Gallium and Helio is pure gold. Choose between 2 and 3-bedroom homes, spread out in three towers, lavishly designed and suitably spacious to accommodate the biggest expectations of the most discerning homeowners. In addition to the richly rewarding home life, you also benefit from the convenience of a well-connected location and the endless joy leisure of multiple amenities.



STRIKE GOLD WITH AN UNBEATABLE LOCATION



Scan to Strike Gold



EXPERIENCE THE GOLD STANDARD IN URBAN LIFESTYLE.

Every one of the 80+ amenities at Brigade El Dorado is as good as gold. With the rare luxury of so much choice you are guaranteed a life of varied recreation, ranging between relaxing activities to more active pursuits. The possibilities for how you spend your leisure time are endless, and the rewards plenty.





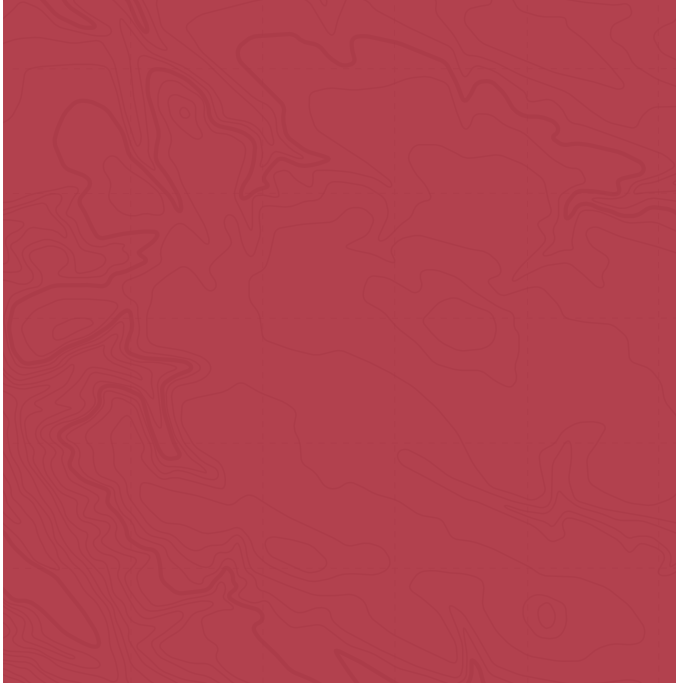
4-SCREEN



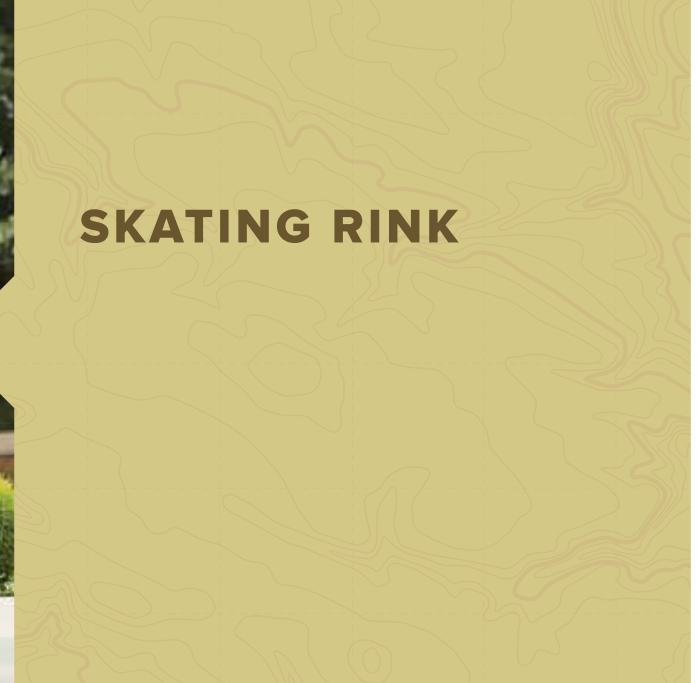
MINI-GOLF GREEN



FOOTBALL FIELD



SKATING RINK





Artist's impression

MINI-CRICKET FIELD

Designed for kids and adults of all ages, our mini cricket field will inspire you to practice your straight drives once again.



Artist's impression

CLUBHOUSE

Give your health the importance it deserves. Choose between our two feature-packed clubhouses, offering a bouquet of fitness and recreational amenities to help you get in the best shape of your life.



Artist's impression

MULTIPLE SWIMMING POOLS

Kids love it. Adults do too. With multiple swimming pools to choose from, water-sports will become your family's favorite new past-time.



Artist's impression

KIDS PLAY AREA

Designed for kids of all ages, our play area is packed with innovative outdoor games, where your little angel can play and frolic around all day.



Artist's impression

FARM CAFÉ

A great place to relax and enjoy healthful juices and dishes prepared using fresh organic produce.



Artist's impression

LANDSCAPING

A green, cool haven filled with a cornucopia of native flora and a calling card for migratory birds - the central greens is where nature takes everyone in its ever comforting embrace.

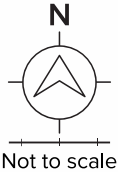
MASTER PLAN



LEGEND

- | | | | |
|----|-----------------------------|----|---------------------------------------|
| 01 | ENTRY | 27 | PLANTED PLAY AREA |
| 02 | EXIT | 28 | OUTDOOR GYM |
| 03 | GUARD ROOM | 29 | COMMUNITY FARMING |
| 04 | FEATURE WALL | 30 | FARM CAFE |
| 05 | REFLECTIVE WATER BODY | 31 | AMPHITHEATER |
| 06 | ARRIVAL COURT | 32 | BASKETBALL COURT |
| 07 | WAITING AREA | 33 | TENNIS COURT |
| 08 | PERIPHERAL WALKWAY | 34 | VOLLEYBALL COURT |
| 09 | PARKING | 35 | SKATING RINK |
| 10 | LAWN WITH SEATING | 36 | SKATE PARK |
| 11 | PATHWAY | 37 | FOOTBALL FIELD |
| 12 | MEDIAN WITH TOWER SIGNAGE | 38 | PLANTED BERM |
| 13 | TODDLERS PLAY AREA | 39 | RAMP/STEPS FROM THE NORTHERN CLUSTERS |
| 14 | SEATING COURT | 40 | BIO SWALE |
| 15 | DROP OFF AREA | 41 | RETENTION POND |
| 16 | MIYAWAKI FOREST | 42 | POND SIDE DECK |
| 17 | PET PARK | 43 | STORM WATER STREAM |
| 18 | CLUB SPILL OUT LAWN | 44 | BERM WITH BUTTERFLY GARDEN |
| 19 | MOUND WITH STEPS AND SEATS | 45 | RAMP IN BERM |
| 20 | MULTI-LEVEL POOL | 46 | MULCH PATHWAY |
| 21 | MINI CRICKET FIELD | 47 | STEPS EMBEDDED IN MOUND |
| 22 | SPECTATOR SEATING STAND | 48 | STEPPING STONES |
| 23 | PRACTICE CRICKET PITCHES | 49 | MINI GOLF PUTTING GREEN |
| 24 | KIDS' PLAY LAWN WITH MOUNDS | 50 | LANDSCAPE SPINE WITH AROMATIC PLANTS |
| 25 | PLAY PLATFORMS | 51 | LANDSCAPED TERRACES |
| 26 | SAND PIT | 52 | CLOCK TOWER |

--- PARKS AND OPEN SPACES
--- CIVIC AMENITIES



The information depicted herein viz., master plans, floor plans, furniture layout, fittings, illustrations, specifications, designs, dimensions, rendered views, colours, amenities and facilities etc., are subject to change without notifications as may be required by the relevant authorities or the developer's architect, and cannot form part of an offer or contract. Whilst every care is taken in providing this information, the Developer cannot be held liable for variations. All illustrations and pictures are artist's impression only. The information are subject to variations, additions, deletions, substitutions and modifications as may be recommended by the company's architect and/or the relevant approving authorities. The Developer is wholly exempt from any liability on account of any claim in this regard. (1 square metre = 10.764 square feet). E & OE.


All dimensions and calculations are done in metric system (M/ Sq.m), and imperial system (Ft/ Sq.ft) shown is for reference only.

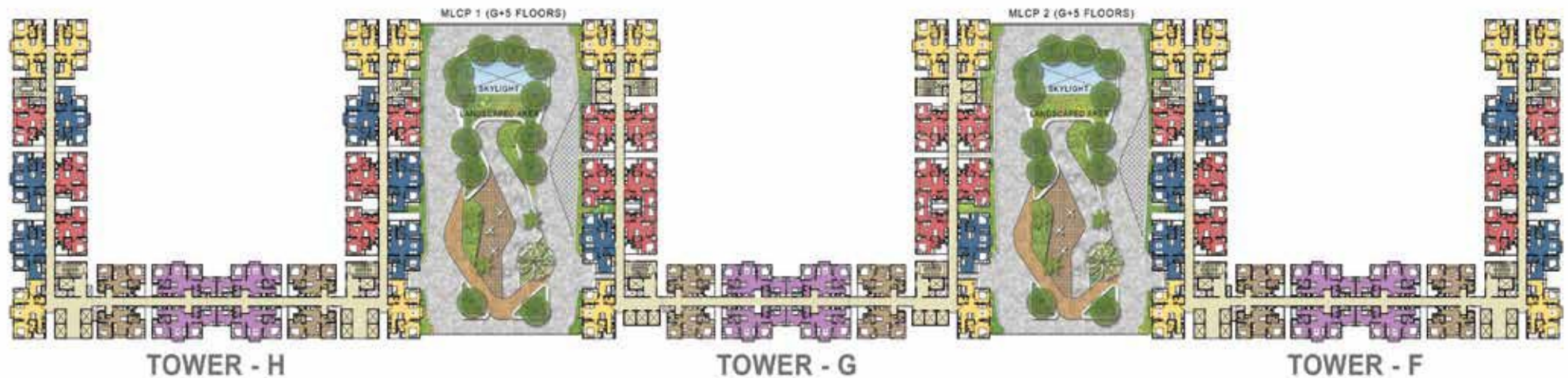
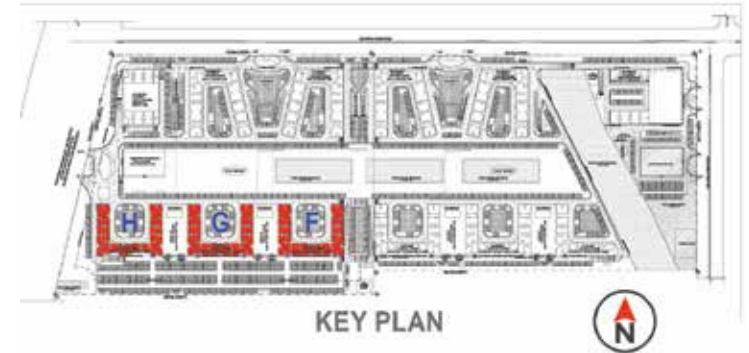


PROJECT UNIT PLANS

6th FLOOR PLAN (MLCP ROOF) (TOWER - F, G, H)

LEGEND

	TYPE - A 3 BHK UNIT
	TYPE - A1 3 BHK UNIT
	TYPE - A2 3 BHK UNIT
	TYPE - B 2 BHK UNIT
	TYPE - B1 2 BHK UNIT



The information depicted herein viz., master plans, floor plans, furniture layout, fittings, illustrations, specifications, designs, dimensions, rendered views, colours, amenities and facilities etc., are subject to change without notifications as may be required by the relevant authorities or the developer's architect, and cannot form part of an offer or contract. Whilst every care is taken in providing this information, the Developer cannot be held liable for variations. All illustrations and pictures are artist's impression only. The information are subject to variations, additions, deletions, substitutions and modifications as may be recommended by the company's architect and/or the relevant approving authorities. The Developer is wholly exempt from any liability on account of any claim in this regard. (1 square metre = 10.764 square feet). E & OE.

All dimensions and calculations are done in metric system (M/ Sq.m), and imperial system (Ft/ Sq.ft) shown is for reference only.

BRIGADE
EL DORADO

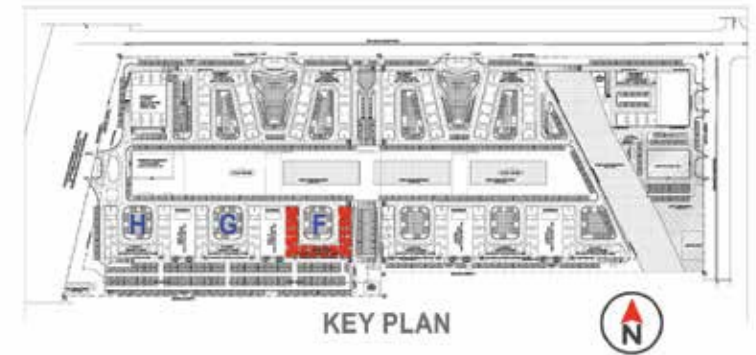
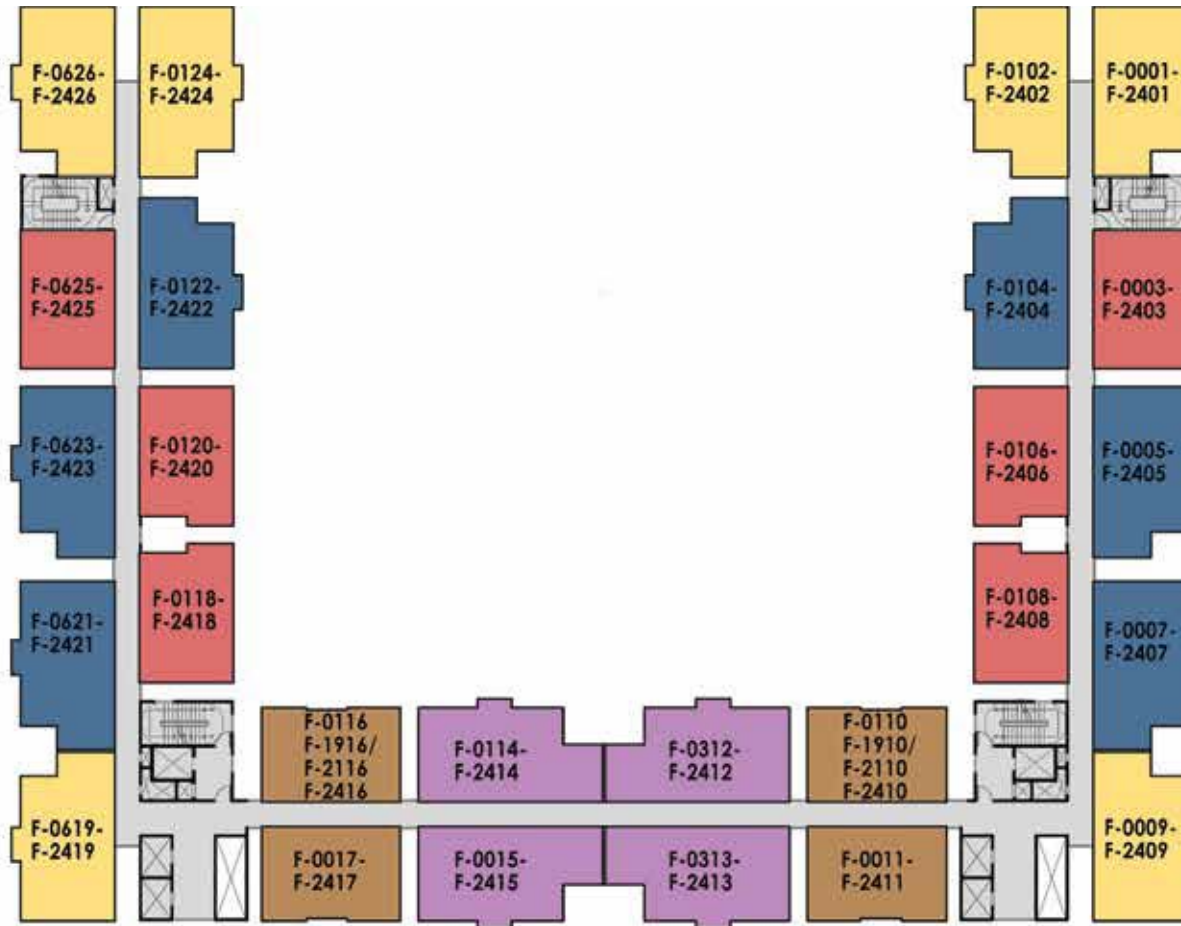
2 BHK

795 SQ.FT.
799 SQ.FT.

3 BHK

1043 SQ.FT.
1068 SQ.FT.

UNIT DISTRIBUTION PLAN (TOWER - F)



LEGEND

- TYPE - A 3 BHK UNIT
- TYPE - A1 3 BHK UNIT
- TYPE - A2 3 BHK UNIT
- TYPE - B 2 BHK UNIT
- TYPE - B1 2 BHK UNIT

- SBA - 1043 sq.ft / 96.94 Sq.m
- SBA - 1043 sq.ft / 96.94 Sq.m
- SBA - 1068 sq.ft / 99.21 Sq.m
- SBA - 795 sq.ft / 73.87 Sq.m
- SBA - 799 sq.ft / 74.22 Sq.m

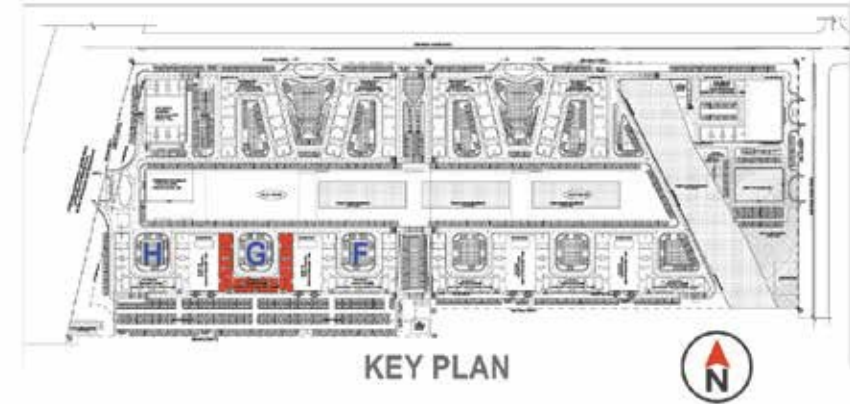
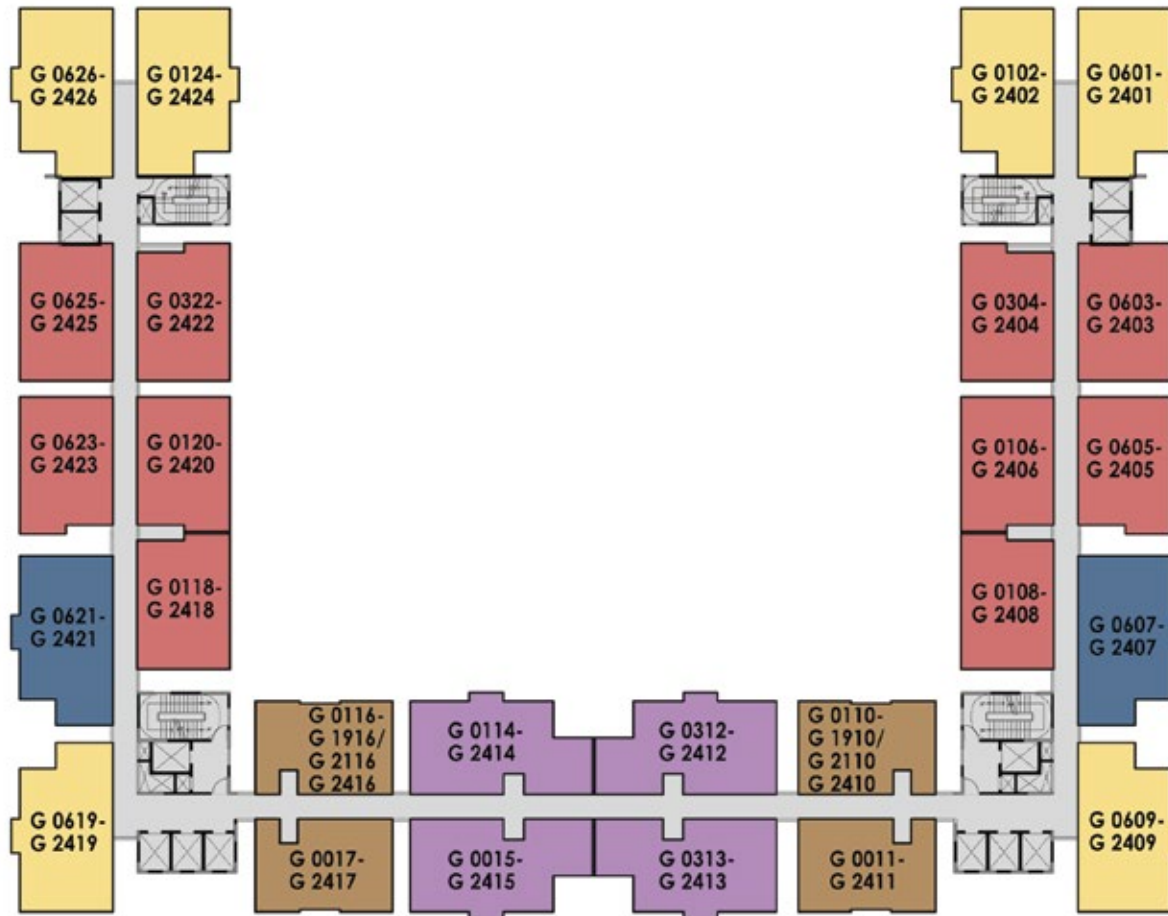
The information depicted herein viz., master plans, floor plans, furniture layout, fittings, illustrations, specifications, designs, dimensions, rendered views, colours, amenities and facilities etc., are subject to change without notifications as may be required by the relevant authorities or the developer's architect, and cannot form part of an offer or contract. Whilst every care is taken in providing this information, the Developer cannot be held liable for variations. All illustrations and pictures are artist's impression only. The information are subject to variations, additions, deletions, substitutions and modifications as may be recommended by the company's architect and/or the relevant approving authorities. The Developer is wholly exempt from any liability on account of any claim in this regard. (1 square metre = 10.764 square feet). E & OE.

All dimensions and calculations are done in metric system (M/ Sq.m), and imperial system (Ft/ Sq.ft) shown is for reference only.

BRIGADE
EL DORADO

UNIT DISTRIBUTION PLAN

(TOWER - G)



LEGEND

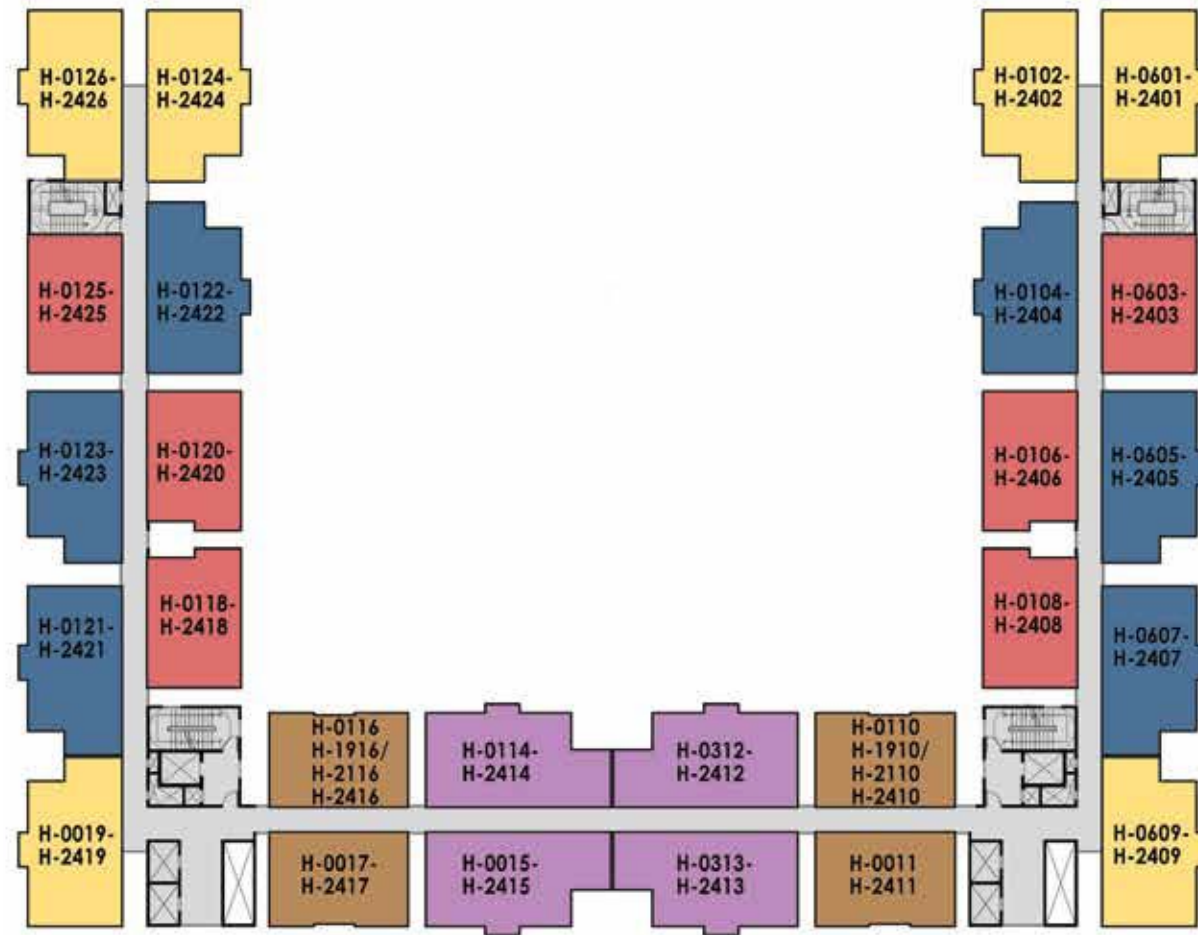
	TYPE - A 3 BHK UNIT	SBA - 1043 sq.ft / 96.90 Sq.m
	TYPE - A1 3 BHK UNIT	SBA - 1043 sq.ft / 96.90 Sq.m
	TYPE - A2 3 BHK UNIT	SBA - 1068 sq.ft / 99.22 Sq.m
	TYPE - B 2 BHK UNIT	SBA - 795 sq.ft / 73.86 Sq.m
	TYPE - B1 2 BHK UNIT	SBA - 799 sq.ft / 74.23 Sq.m

The information depicted herein viz., master plans, floor plans, furniture layout, fittings, illustrations, specifications, designs, dimensions, rendered views, colours, amenities and facilities etc., are subject to change without notifications as may be required by the relevant authorities or the developer's architect, and cannot form part of an offer or contract. Whilst every care is taken in providing this information, the Developer cannot be held liable for variations. All illustrations and pictures are artist's impression only. The information are subject to variations, additions, deletions, substitutions and modifications as may be recommended by the company's architect and/or the relevant approving authorities. The Developer is wholly exempt from any liability on account of any claim in this regard. (1 square metre = 10.764 square feet). E & OE.

All dimensions and calculations are done in metric system (M/ Sq.m), and imperial system (Ft/ Sq.ft) shown is for reference only.

BRIGADE
EL DORADO

UNIT DISTRIBUTION PLAN (TOWER - H)



LEGEND

 TYPE - A 3 BHK UNIT	SBA - 1043 sq.ft / 96.94 Sq.m
 TYPE - A1 3 BHK UNIT	SBA - 1043 sq.ft / 96.94 Sq.m
 TYPE - A2 3 BHK UNIT	SBA - 1068 sq.ft / 99.21 Sq.m
 TYPE - B 2 BHK UNIT	SBA - 795 sq.ft / 73.87 Sq.m
 TYPE - B1 2 BHK UNIT	SBA - 799 sq.ft / 74.22 Sq.m

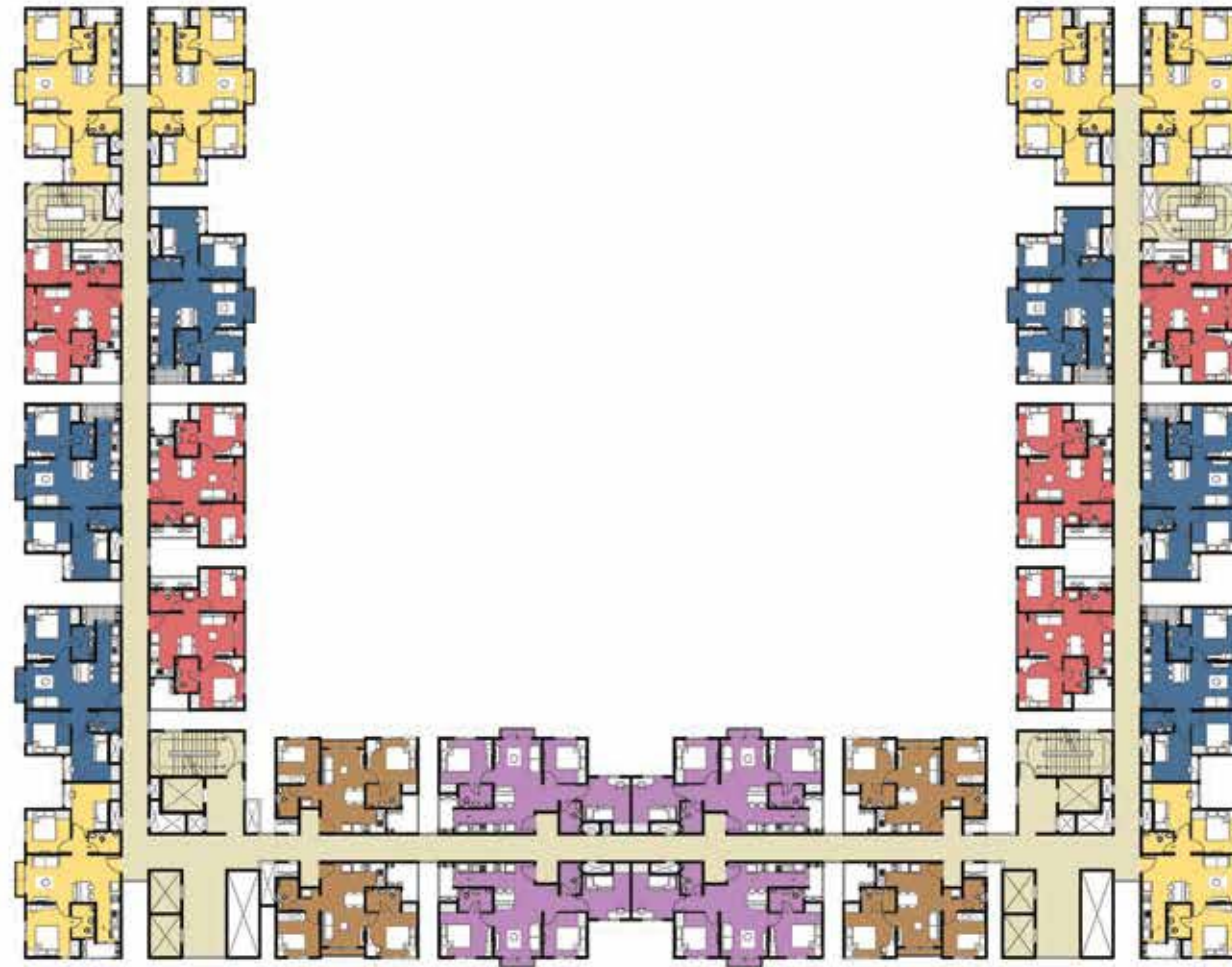
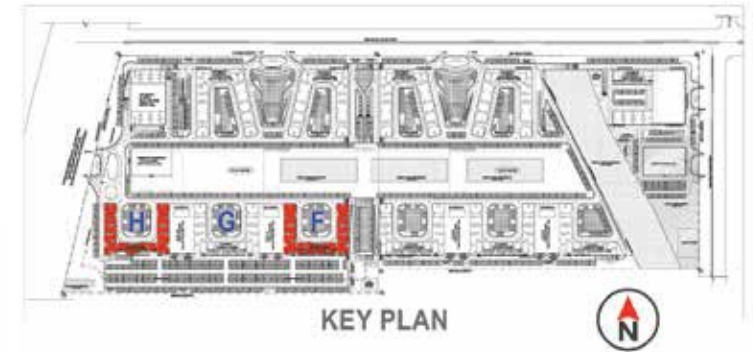
The information depicted herein viz., master plans, floor plans, furniture layout, fittings, illustrations, specifications, designs, dimensions, rendered views, colours, amenities and facilities etc., are subject to change without notifications as may be required by the relevant authorities or the developer's architect, and cannot form part of an offer or contract. Whilst every care is taken in providing this information, the Developer cannot be held liable for variations. All illustrations and pictures are artist's impression only. The information are subject to variations, additions, deletions, substitutions and modifications as may be recommended by the company's architect and/or the relevant approving authorities. The Developer is wholly exempt from any liability on account of any claim in this regard. (1 square metre = 10.764 square feet). E & OE.

All dimensions and calculations are done in metric system (M/ Sq.m), and imperial system (Ft/ Sq.ft) shown is for reference only.

BRIGADE
EL DORADO

TYPICAL TOWER PLAN

(TOWER - F & H)



LEGEND

- TYPE - A 3 BHK UNIT
- TYPE - A1 3 BHK UNIT
- TYPE - A2 3 BHK UNIT
- TYPE - B 2 BHK UNIT
- TYPE - B1 2 BHK UNIT

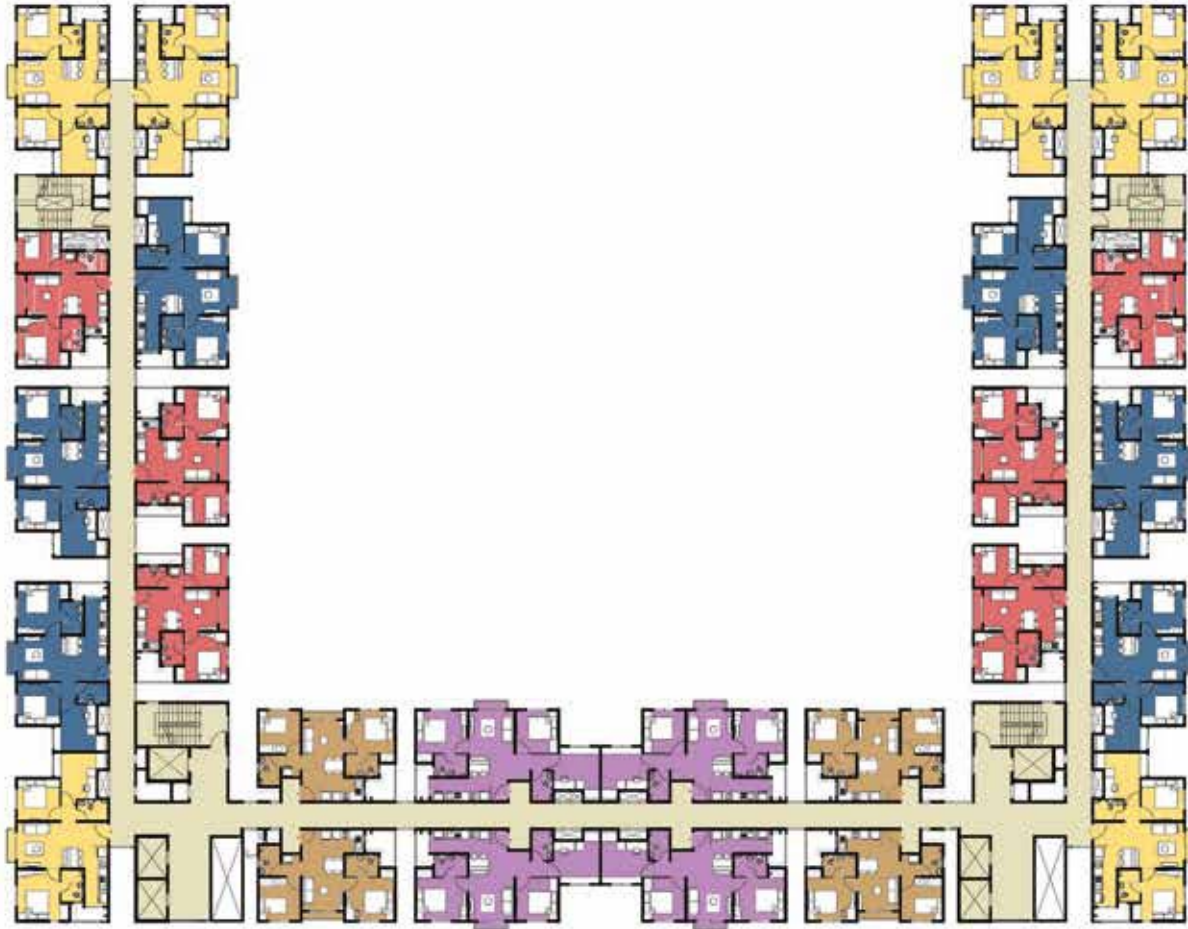
The information depicted herein viz., master plans, floor plans, furniture layout, fittings, illustrations, specifications, designs, dimensions, rendered views, colours, amenities and facilities etc., are subject to change without notifications as may be required by the relevant authorities or the developer's architect, and cannot form part of an offer or contract. Whilst every care is taken in providing this information, the Developer cannot be held liable for variations. All illustrations and pictures are artist's impression only. The information are subject to variations, additions, deletions, substitutions and modifications as may be recommended by the company's architect and/or the relevant approving authorities. The Developer is wholly exempt from any liability on account of any claim in this regard. (1 square metre = 10.764 square feet). E & OE.

All dimensions and calculations are done in metric system (M/ Sq.m), and imperial system (Ft/ Sq.ft) shown is for reference only.

BRIGADE
EL DORADO

TYPICAL TOWER PLAN

(TOWER - F)



LEGEND

- TYPE - A 3 BHK UNIT
- TYPE - A1 3 BHK UNIT
- TYPE - A2 3 BHK UNIT
- TYPE - B 2 BHK UNIT
- TYPE - B1 2 BHK UNIT

The information depicted herein viz., master plans, floor plans, furniture layout, fittings, illustrations, specifications, designs, dimensions, rendered views, colours, amenities and facilities etc., are subject to change without notifications as may be required by the relevant authorities or the developer's architect, and cannot form part of an offer or contract. Whilst every care is taken in providing this information, the Developer cannot be held liable for variations. All illustrations and pictures are artist's impression only. The information are subject to variations, additions, deletions, substitutions and modifications as may be recommended by the company's architect and/or the relevant approving authorities. The Developer is wholly exempt from any liability on account of any claim in this regard. (1 square metre = 10.764 square feet). E & OE.

All dimensions and calculations are done in metric system (M/ Sq.m), and imperial system (Ft/ Sq.ft) shown is for reference only.

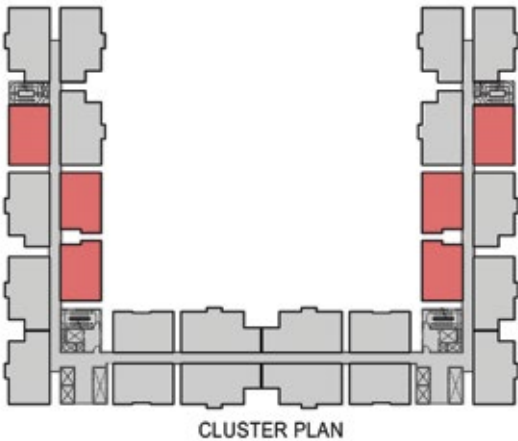
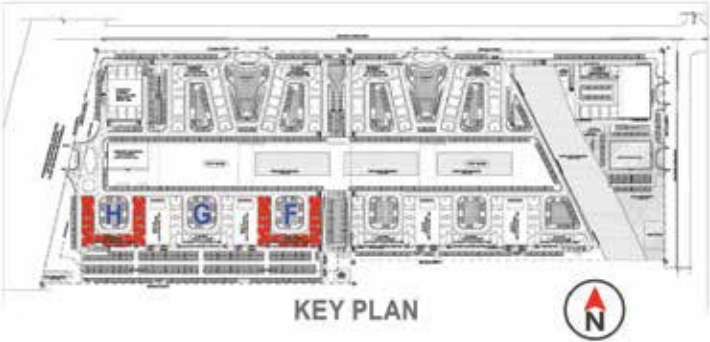
BRIGADE
EL DORADO

2 BEDROOM UNIT

(TYPE - B) (F & H TOWER)



SUPER BUILT-UP AREA	CARPET AREA	BALCONY
795 Sq.ft / 73.87 Sq.m.	466 Sq.ft / 43.32 Sq.m	16 Sq.ft / 1.512 Sqm



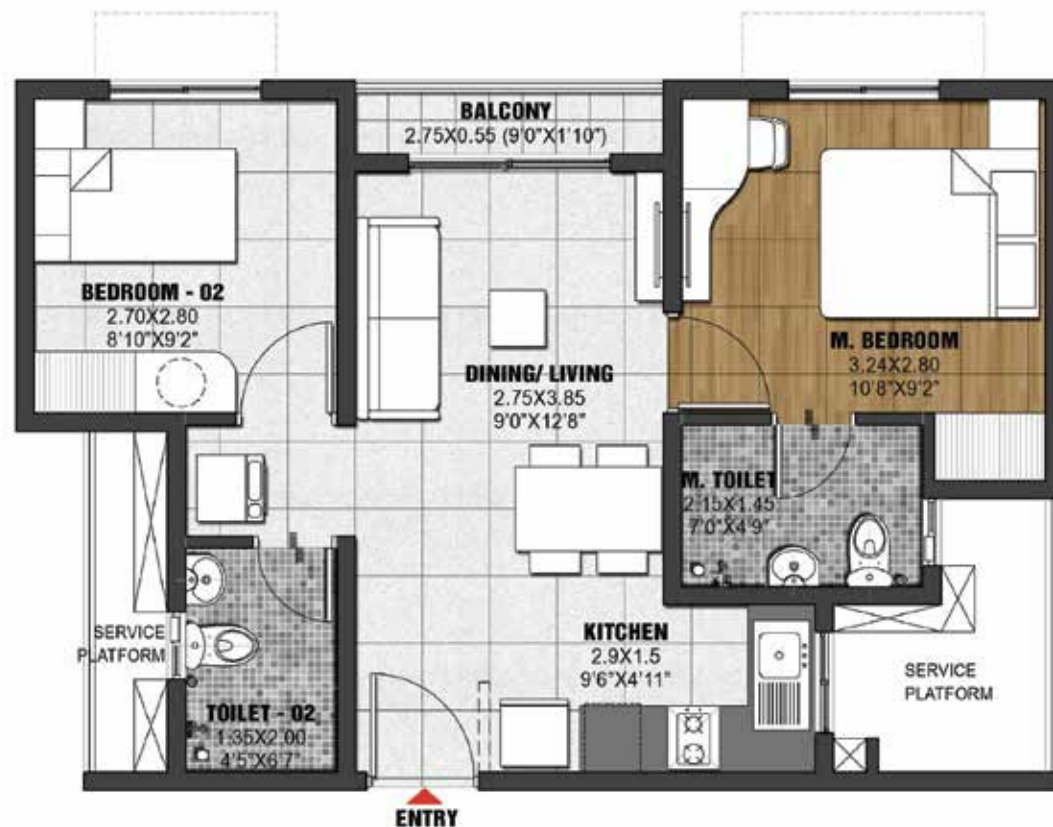
TYPE - B	CLUSTER - F	CLUSTER - H
	F0003 - F2403	H0603 - H2403
	F0106 - F2406	H0106 - H2406
	F0108 - F2408	H0108 - H2408
	F0118 - F2418	H0118 - H2418
	F0120 - F2420	H0120 - H2420
	F0625 - F2425	H0125 - H2425

The information depicted herein viz., master plans, floor plans, furniture layout, fittings, illustrations, specifications, designs, dimensions, rendered views, colours, amenities and facilities etc., are subject to change without notifications as may be required by the relevant authorities or the developer's architect, and cannot form part of an offer or contract. Whilst every care is taken in providing this information, the Developer cannot be held liable for variations. All illustrations and pictures are artist's impression only. The information are subject to variations, additions, deletions, substitutions and modifications as may be recommended by the company's architect and/or the relevant approving authorities. The Developer is wholly exempt from any liability on account of any claim in this regard. (1 square metre = 10.764 square feet), E & OE.

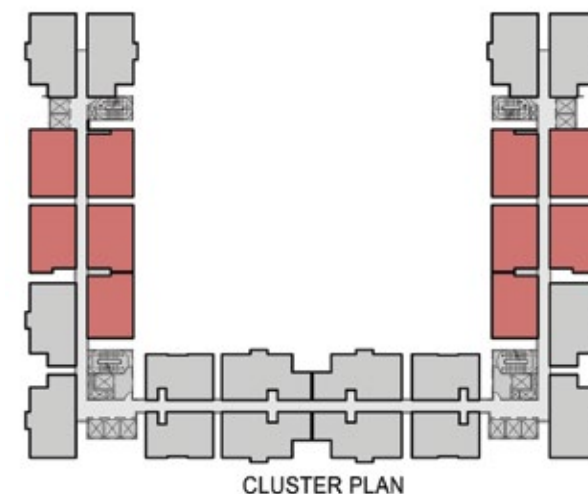
All dimensions and calculations are done in metric system (M/ Sq.m), and imperial system (Ft/ Sq.ft) shown is for reference only.

2 BEDROOM UNIT

(TYPE - B) (G TOWER)



SUPER BUILT-UP AREA	CARPET AREA	BALCONY
795 Sq.ft / 73.86 Sq.m.	466 Sq.ft / 43.32 Sq.m	16 Sq.ft / 1.512 Sqm



UNITS
G-0603-2403, G-0304-2404, G-0605-2405, G-0106-2406, G-0108-2408, G-0118-2418, G-0120-2420, G-0322-2422, G-0623-2423, G-0625-2425

The information depicted herein viz., master plans, floor plans, furniture layout, fittings, illustrations, specifications, designs, dimensions, rendered views, colours, amenities and facilities etc., are subject to change without notifications as may be required by the relevant authorities or the developer's architect, and cannot form part of an offer or contract. Whilst every care is taken in providing this information, the Developer cannot be held liable for variations. All illustrations and pictures are artist's impression only. The information are subject to variations, additions, deletions, substitutions and modifications as may be recommended by the company's architect and/or the relevant approving authorities. The Developer is wholly exempt from any liability on account of any claim in this regard. (1 square metre = 10.764 square feet). E & OE.

All dimensions and calculations are done in metric system (M/ Sq.m), and imperial system (Ft/ Sq.ft) shown is for reference only.

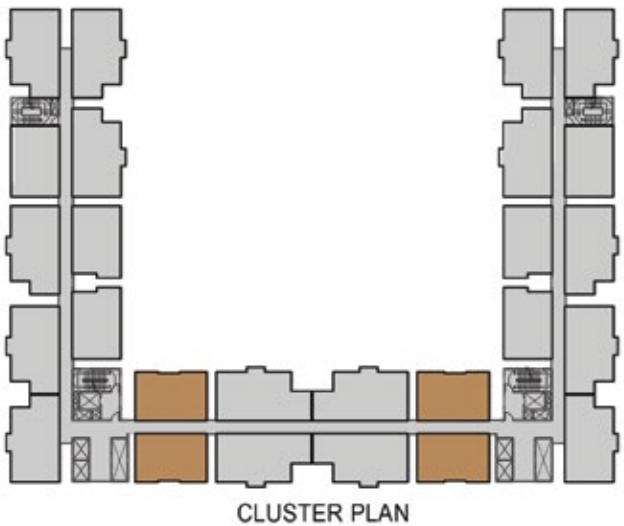
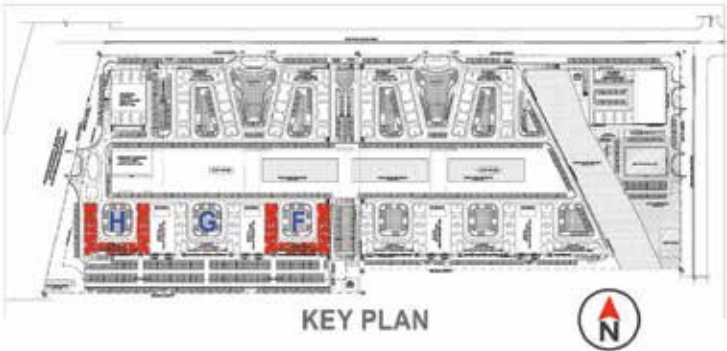
BRIGADE
EL DORADO

2 BEDROOM UNIT

(TYPE - B1) (F & H TOWER)



SUPER BUILT-UP AREA	CARPET AREA	BALCONY
799 Sq.ft / 74.22 Sq.m.	471 Sq.ft / 43.72 Sq.m	12 Sq.ft /1.09Sqm



TYPE - B1	CLUSTER - F	CLUSTER - H
	F0110 - 1910/2110-2410	H0110 - 1910/2110-2410
	F0011 - F2411	H0011-2411
	F0116 - 1916 / F2116 - F2416	H0116-1916/2116-2416
	F0017 - F2417	H0017 - 2417

The information depicted herein viz., master plans, floor plans, furniture layout, fittings, illustrations, specifications, designs, dimensions, rendered views, colours, amenities and facilities etc., are subject to change without notifications as may be required by the relevant authorities or the developer's architect, and cannot form part of an offer or contract. Whilst every care is taken in providing this information, the Developer cannot be held liable for variations. All illustrations and pictures are artist's impression only. The information are subject to variations, additions, deletions, substitutions and modifications as may be recommended by the company's architect and/or the relevant approving authorities. The Developer is wholly exempt from any liability on account of any claim in this regard. (1 square metre = 10.764 square feet), E & OE.

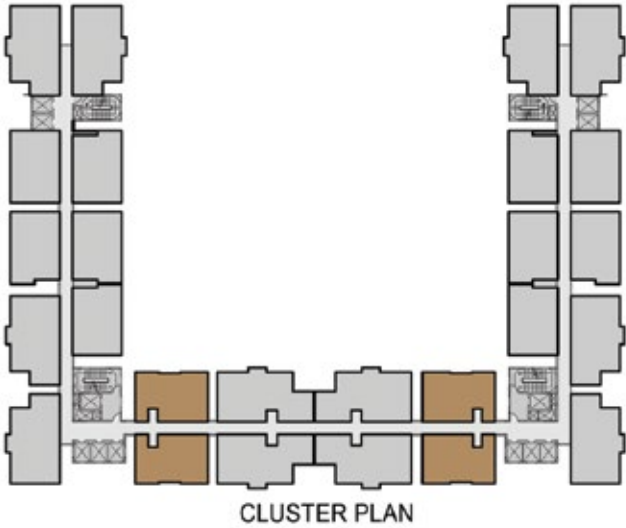
All dimensions and calculations are done in metric system (M/ Sq.m), and imperial system (Ft/ Sq.ft) shown is for reference only.

2 BEDROOM UNIT

(TYPE - B1) (G TOWER)



SUPER BUILT-UP AREA	CARPET AREA	BALCONY
799 Sq.ft / 74.23 Sq.m.	471 Sq.ft / 43.72 Sq.m	12 Sq.ft / 1.1 Sqm



UNITS
G-0116-1916/ 2116-2416, G-0110-1910/ 2110-2410, G-0011-2411, G-0017-2417

The information depicted herein viz., master plans, floor plans, furniture layout, fittings, illustrations, specifications, designs, dimensions, rendered views, colours, amenities and facilities etc., are subject to change without notifications as may be required by the relevant authorities or the developer's architect, and cannot form part of an offer or contract. Whilst every care is taken in providing this information, the Developer cannot be held liable for variations. All illustrations and pictures are artist's impression only. The information are subject to variations, additions, deletions, substitutions and modifications as may be recommended by the company's architect and/or the relevant approving authorities. The Developer is wholly exempt from any liability on account of any claim in this regard. (1 square metre = 10.764 square feet). E & OE.

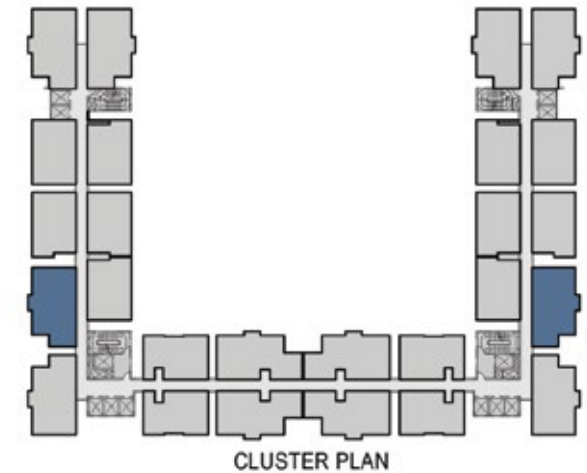
All dimensions and calculations are done in metric system (M/ Sq.m), and imperial system (Ft/ Sq.ft) shown is for reference only.

3 BEDROOM UNIT

(TYPE - A) (G TOWER)



SUPER BUILT-UP AREA	CARPET AREA	BALCONY
1043 Sq.ft / 96.90 Sq.m.	628 Sq.ft / 58.31 Sq.m	11 Sq.ft / 1.05 Sqm



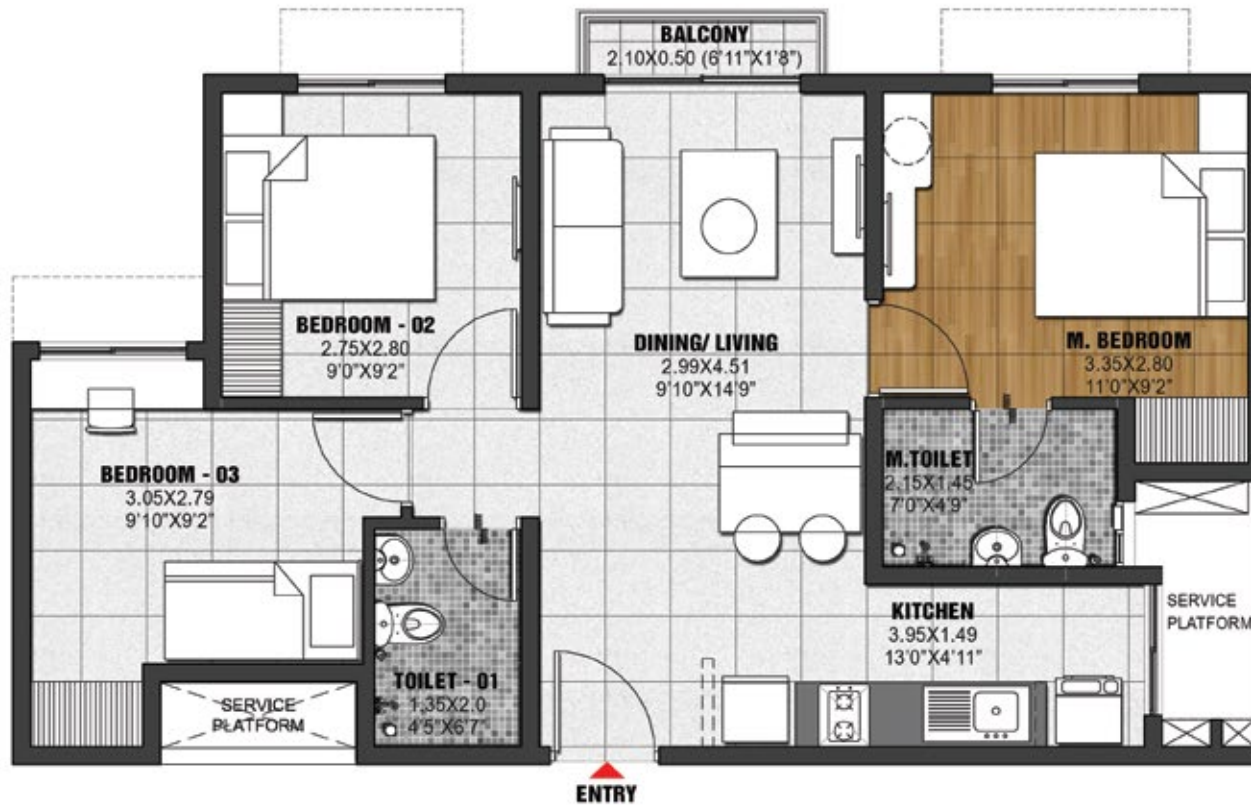
UNITS
G-0607-2407, G-0621-2421

The information depicted herein viz., master plans, floor plans, furniture layout, fittings, illustrations, specifications, designs, dimensions, rendered views, colours, amenities and facilities etc., are subject to change without notifications as may be required by the relevant authorities or the developer's architect, and cannot form part of an offer or contract. Whilst every care is taken in providing this information, the Developer cannot be held liable for variations. All illustrations and pictures are artist's impression only. The information are subject to variations, additions, deletions, substitutions and modifications as may be recommended by the company's architect and/or the relevant approving authorities. The Developer is wholly exempt from any liability on account of any claim in this regard. (1 square metre = 10.764 square feet), E & OE.

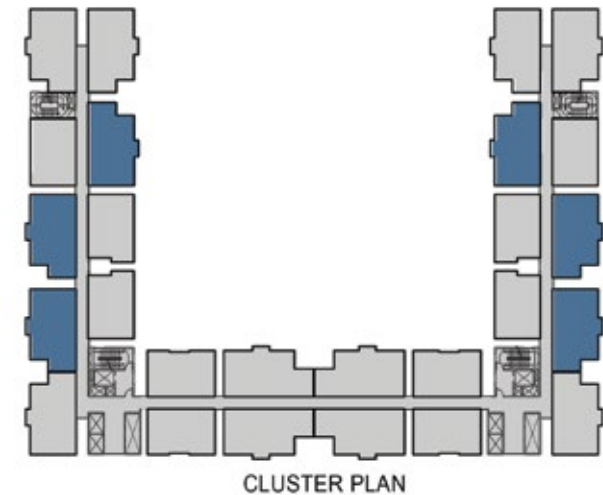
All dimensions and calculations are done in metric system (M/ Sq.m), and imperial system (Ft/ Sq.ft) shown is for reference only.

BRIGADE
EL DORADO

3 BEDROOM UNIT (TYPE - A) (F & H TOWER)



SUPER BUILT-UP AREA	CARPET AREA	BALCONY
1043 Sq.ft / 96.94 Sq.m.	628 Sq.ft / 58.31 Sq.m	11 Sq.ft / 1.05 Sqm



TYPE - A	CLUSTER - F	CLUSTER - H
	F0104 - F2404	H0104 - H2404
	F0005 - F2405	H0605 - H2405
	F0007 - F2407	H0607 - H2407
	F0122 - F2422	H0122 - H2422
	F0623 - F2423	H0123 - H2423
	F0621 - F2421	H0121 - H2421

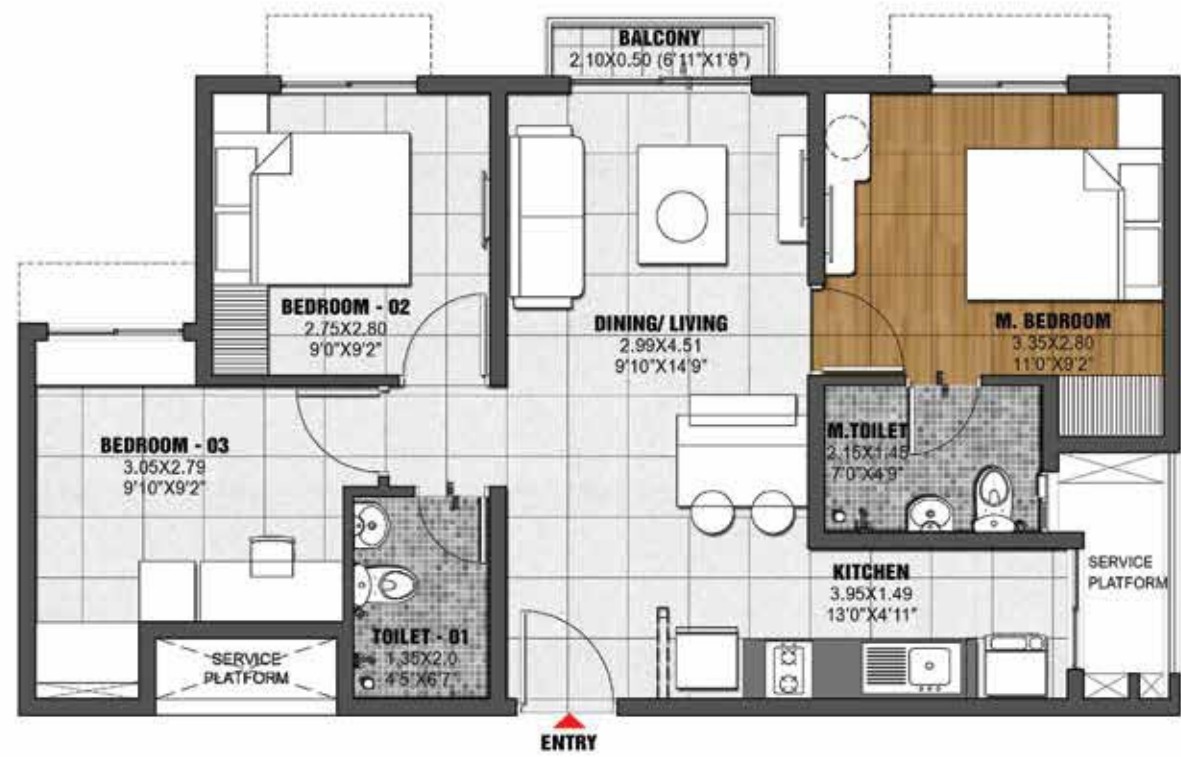
The information depicted herein viz., master plans, floor plans, furniture layout, fittings, illustrations, specifications, designs, dimensions, rendered views, colours, amenities and facilities etc., are subject to change without notifications as may be required by the relevant authorities or the developer's architect, and cannot form part of an offer or contract. Whilst every care is taken in providing this information, the Developer cannot be held liable for variations. All illustrations and pictures are artist's impression only. The information are subject to variations, additions, deletions, substitutions and modifications as may be recommended by the company's architect and/or the relevant approving authorities. The Developer is wholly exempt from any liability on account of any claim in this regard. (1 square metre = 10.764 square feet). E & OE.

All dimensions and calculations are done in metric system (M/ Sq.m), and imperial system (Ft/ Sq.ft) shown is for reference only.

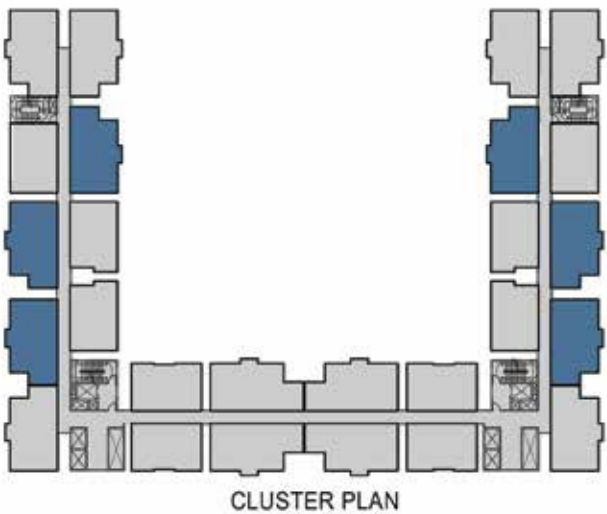
BRIGADE
EL DORADO

3 BEDROOM UNIT

(TYPE - A) (F TOWER)



SUPER BUILT-UP AREA	CARPET AREA	BALCONY
1043 Sq.ft / 96.94 Sq.m.	628 Sq.ft / 58.31 Sq.m	11 Sq.ft / 1.05 Sqm



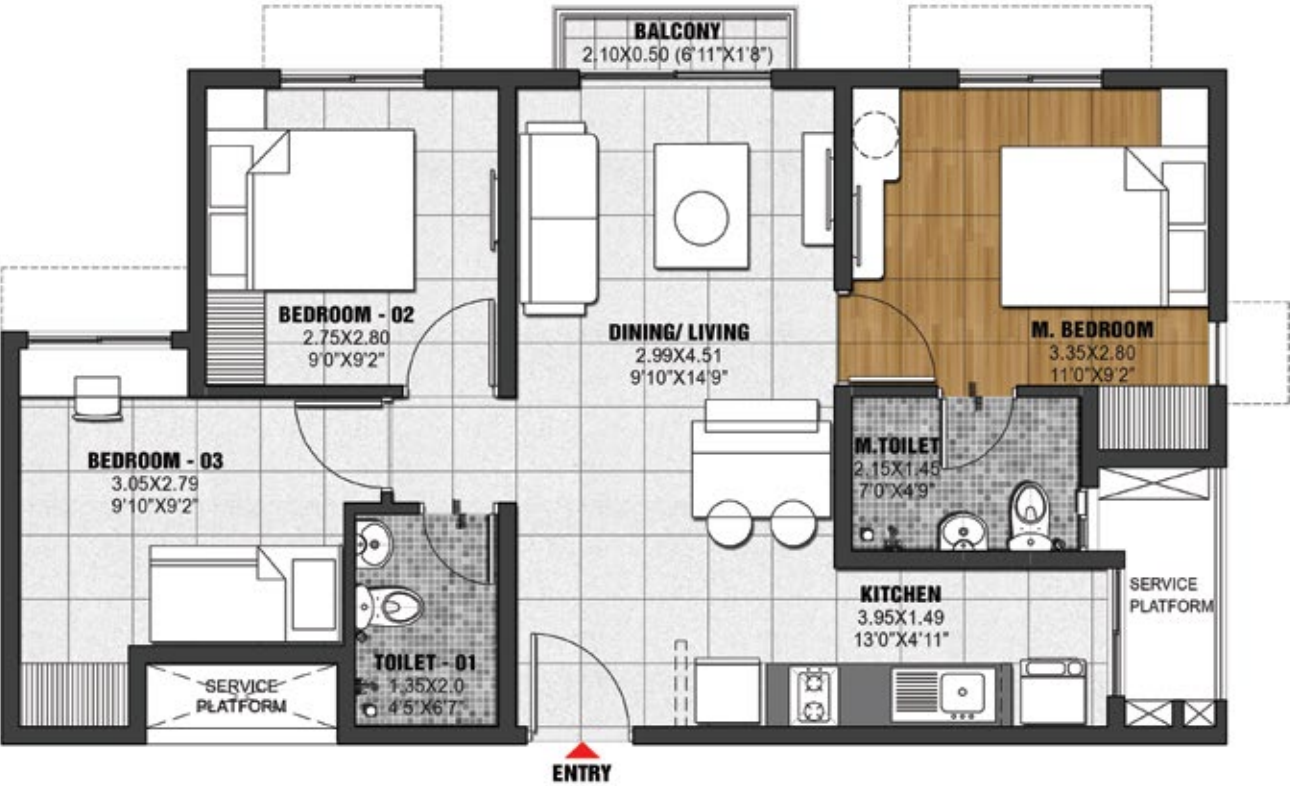
TYPE - A	CLUSTER - F
	F0104 - F2404
	F0005 - F2405
	F0007 - F2407
	F0122 - F2422
	F0623 - F2423
	F0621 - F2421

The information depicted herein viz., master plans, floor plans, furniture layout, fittings, illustrations, specifications, designs, dimensions, rendered views, colours, amenities and facilities etc., are subject to change without notifications as may be required by the relevant authorities or the developer's architect, and cannot form part of an offer or contract. Whilst every care is taken in providing this information, the Developer cannot be held liable for variations. All illustrations and pictures are artist's impression only. The information are subject to variations, additions, deletions, substitutions and modifications as may be recommended by the company's architect and/or the relevant approving authorities. The Developer is wholly exempt from any liability on account of any claim in this regard. (1 square metre = 10.764 square feet), E & OE.

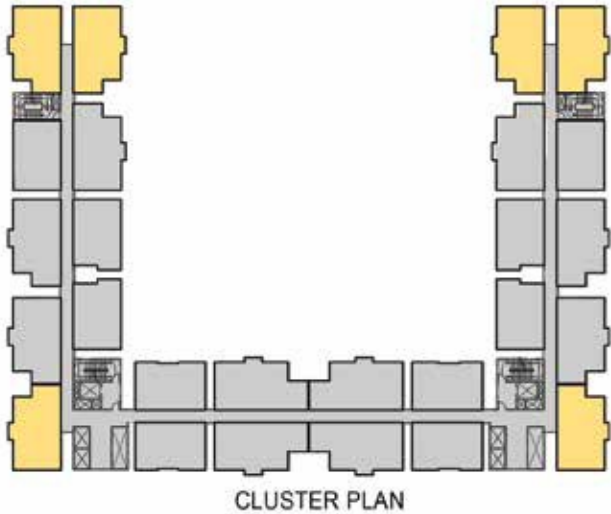
All dimensions and calculations are done in metric system (M/ Sq.m), and imperial system (Ft/ Sq.ft) shown is for reference only.

3 BEDROOM UNIT

(TYPE - A1) (F & H TOWER)



SUPER BUILT-UP AREA	CARPET AREA	BALCONY
1043 Sq.ft / 96.94 Sq.m.	628 Sq.ft / 58.31 Sq.m	11 Sq.ft / 1.05 Sqm



TYPE - A1	CLUSTER - F	CLUSTER - H
	F0001 - F2401	H0601 - H2401
	F0102 - F2402	H0102 - H2402
	F0009 - F2409	H0609 - H2409
	F0124 - F2424	H0124 - H2424
	F0626 - F2426	H0126 - H2426
	F0619 - F2419	H0019 - H2419

The information depicted herein viz., master plans, floor plans, furniture layout, fittings, illustrations, specifications, designs, dimensions, rendered views, colours, amenities and facilities etc., are subject to change without notifications as may be required by the relevant authorities or the developer's architect, and cannot form part of an offer or contract. Whilst every care is taken in providing this information, the Developer cannot be held liable for variations. All illustrations and pictures are artist's impression only. The information are subject to variations, additions, deletions, substitutions and modifications as may be recommended by the company's architect and/or the relevant approving authorities. The Developer is wholly exempt from any liability on account of any claim in this regard. (1 square metre = 10.764 square feet). E & OE.

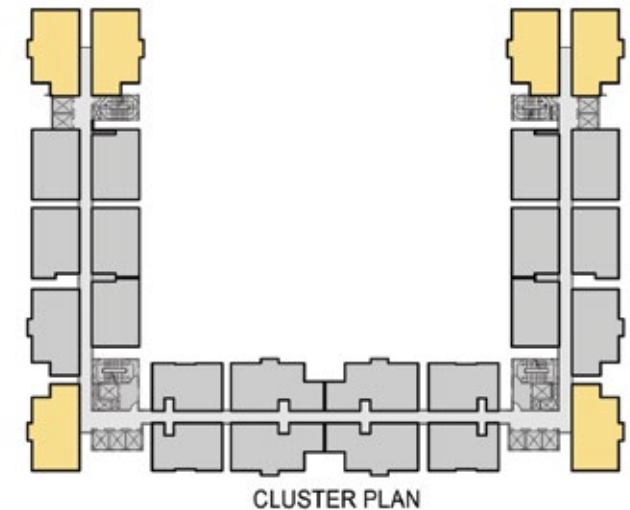
All dimensions and calculations are done in metric system (M/ Sq.m), and imperial system (Ft/ Sq.ft) shown is for reference only.

3 BEDROOM UNIT

(TYPE - A1) (G TOWER)



SUPER BUILT-UP AREA	CARPET AREA	BALCONY
1043 Sq.ft / 96.90 Sq.m.	628 Sq.ft / 58.31 Sq.m	11 Sq.ft / 1.05 Sqm



UNITS
G-0601-2401, G-0102-2402, G-0609-2409, G-0619-2419, G-0124-2424, G-0626-2426

The information depicted herein viz., master plans, floor plans, furniture layout, fittings, illustrations, specifications, designs, dimensions, rendered views, colours, amenities and facilities etc., are subject to change without notifications as may be required by the relevant authorities or the developer's architect, and cannot form part of an offer or contract. Whilst every care is taken in providing this information, the Developer cannot be held liable for variations. All illustrations and pictures are artist's impression only. The information are subject to variations, additions, deletions, substitutions and modifications as may be recommended by the company's architect and/or the relevant approving authorities. The Developer is wholly exempt from any liability on account of any claim in this regard. (1 square metre = 10.764 square feet), E & OE.

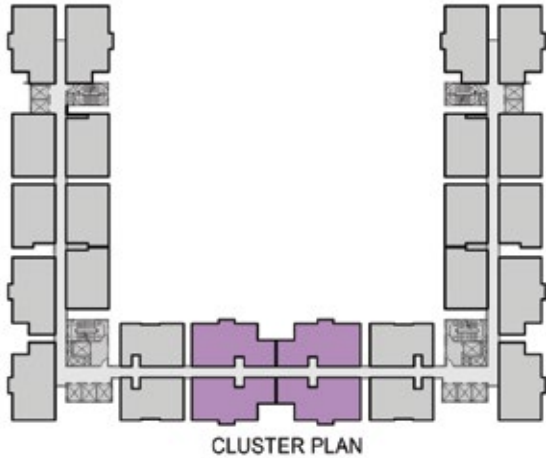
All dimensions and calculations are done in metric system (M/ Sq.m), and imperial system (Ft/ Sq.ft) shown is for reference only.

BRIGADE
EL DORADO

3 BEDROOM UNIT (TYPE - A2) (G TOWER)



SUPER BUILT-UP AREA	CARPET AREA	BALCONY
1068 Sq.ft / 99.22 Sq.m.	643 Sq.ft / 59.69 Sq.m	11 Sq.ft / 1.05 Sqm



UNITS
G-0312-2412, G-0313-2413, G-0114-2414, G-0015-2415

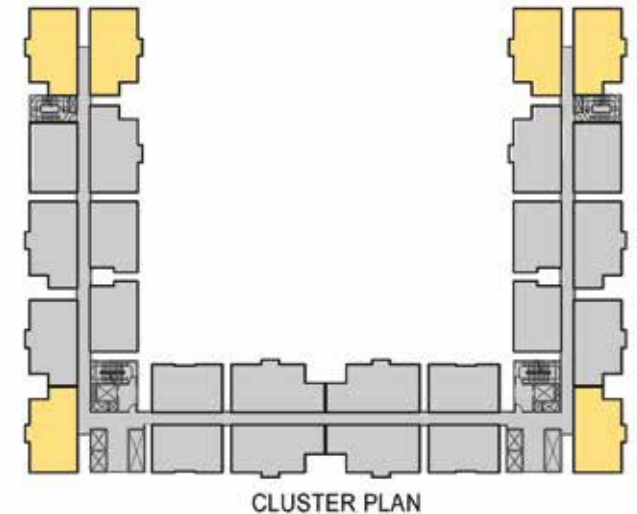
The information depicted herein viz., master plans, floor plans, furniture layout, fittings, illustrations, specifications, designs, dimensions, rendered views, colours, amenities and facilities etc., are subject to change without notifications as may be required by the relevant authorities or the developer's architect, and cannot form part of an offer or contract. Whilst every care is taken in providing this information, the Developer cannot be held liable for variations. All illustrations and pictures are artist's impression only. The information are subject to variations, additions, deletions, substitutions and modifications as may be recommended by the company's architect and/or the relevant approving authorities. The Developer is wholly exempt from any liability on account of any claim in this regard. (1 square metre = 10.764 square feet). E & OE.

All dimensions and calculations are done in metric system (M/ Sq.m), and imperial system (Ft/ Sq.ft) shown is for reference only.

3 BEDROOM UNIT (TYPE - A1) (F TOWER)



SUPER BUILT-UP AREA	CARPET AREA	BALCONY
1043 Sq.ft / 96.94 Sq.m.	628 Sq.ft / 58.31 Sq.m	11 Sq.ft / 1.05 Sqm



TYPE - A1	CLUSTER - F
	F0001 - F2401
	F0102 - F2402
	F0009 - F2409
	F0124 - F2424
	F0626 - F2426
	F0619 - F2419

The information depicted herein viz., master plans, floor plans, furniture layout, fittings, illustrations, specifications, designs, dimensions, rendered views, colours, amenities and facilities etc., are subject to change without notifications as may be required by the relevant authorities or the developer's architect, and cannot form part of an offer or contract. Whilst every care is taken in providing this information, the Developer cannot be held liable for variations. All illustrations and pictures are artist's impression only. The information are subject to variations, additions, deletions, substitutions and modifications as may be recommended by the company's architect and/or the relevant approving authorities. The Developer is wholly exempt from any liability on account of any claim in this regard. (1 square metre = 10.764 square feet), E & OE.

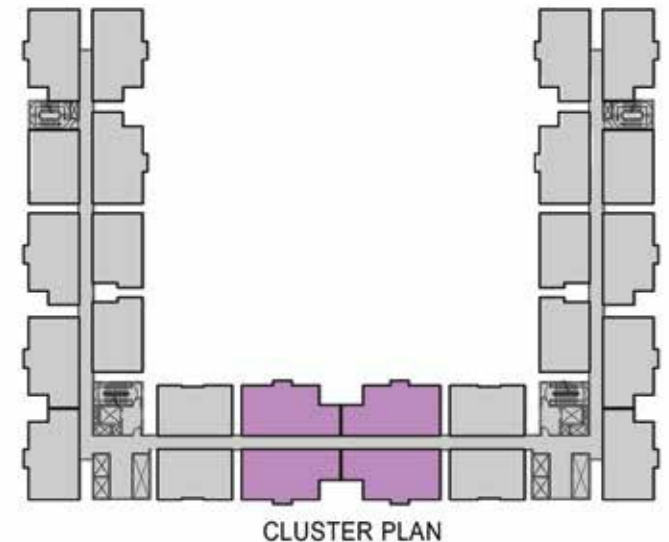
All dimensions and calculations are done in metric system (M/ Sq.m), and imperial system (FV Sq.ft) shown is for reference only.

BRIGADE
EL DORADO

3 BEDROOM UNIT (TYPE - A2) (F & H TOWER)



SUPER BUILT-UP AREA	CARPET AREA	BALCONY
1068 Sq.ft / 99.21 Sq.m.	643 Sq.ft / 59.69 Sq.m	11 Sq.ft / 1.05 Sqm



TYPE - A2	CLUSTER - F	CLUSTER - H
	F0312 - F2412	H0312 - H2412
	F0313 - F2413	H0313 - H2413
	F0114 - F2414	H0114 - H2414
	F0015 - F2415	H0015 - H2415

The information depicted herein viz., master plans, floor plans, furniture layout, fittings, illustrations, specifications, designs, dimensions, rendered views, colours, amenities and facilities etc., are subject to change without notifications as may be required by the relevant authorities or the developer's architect, and cannot form part of an offer or contract. Whilst every care is taken in providing this information, the Developer cannot be held liable for variations. All illustrations and pictures are artist's impression only. The information are subject to variations, additions, deletions, substitutions and modifications as may be recommended by the company's architect and/or the relevant approving authorities. The Developer is wholly exempt from any liability on account of any claim in this regard. (1 square metre = 10.764 square feet). E & OE.

All dimensions and calculations are done in metric system (M/ Sq.m), and imperial system (Ft/ Sq.ft) shown is for reference only.

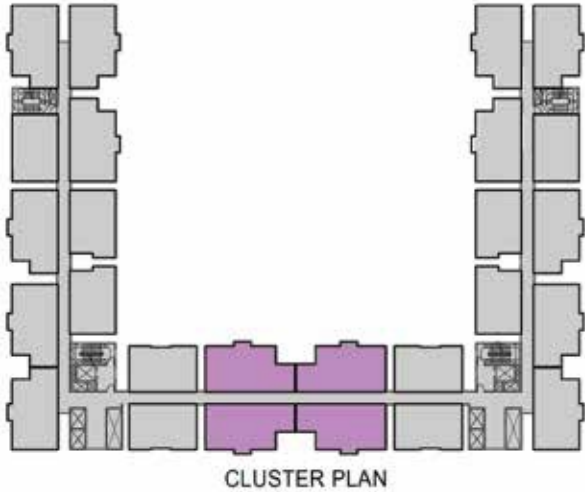
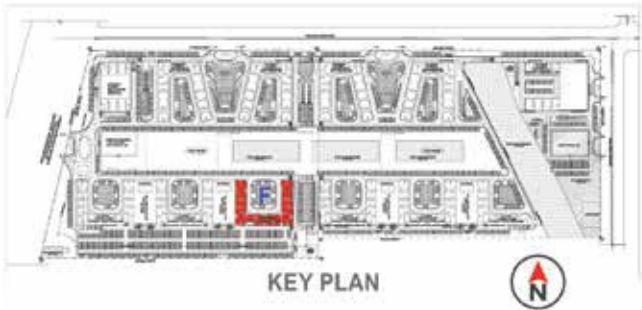
BRIGADE
EL DORADO

3 BEDROOM UNIT

(TYPE-A2) (F TOWER)



SUPER BUILT-UP AREA	CARPET AREA	BALCONY
1068 Sq.ft / 99.21 Sq.m.	643 Sq.ft / 59.69 Sq.m	11 Sq.ft / 1.05 Sqm



TYPE - A2	CLUSTER - F
	F0312 - F2412
	F0313 - F2413
	F0114 - F2414
	F0015 - F2415

The information depicted herein viz., master plans, floor plans, furniture layout, fittings, illustrations, specifications, designs, dimensions, rendered views, colours, amenities and facilities etc., are subject to change without notifications as may be required by the relevant authorities or the developer's architect, and cannot form part of an offer or contract. Whilst every care is taken in providing this information, the Developer cannot be held liable for variations. All illustrations and pictures are artist's impression only. The information are subject to variations, additions, deletions, substitutions and modifications as may be recommended by the company's architect and/or the relevant approving authorities. The Developer is wholly exempt from any liability on account of any claim in this regard. (1 square metre = 10.764 square feet). E & OE.

All dimensions and calculations are done in metric system (M/ Sq.m), and imperial system (Ft/ Sq.ft) shown is for reference only.

SPECIFICATIONS

STRUCTURE

RCC Framed structure using Aluminium Form Work

COMMON AREA - FLOORING

Waiting lounge, reception, GF lobby & lift lobby: Marble, Granite & Vitrified Tiles

Staircases: Concrete step tiles, Vitrified tiles & Epoxy coating for stairs (from 1st floor)

Other lift lobby and corridors (upper): Vitrified tiles (Matt Finish)

APARTMENT UNITS - FLOORING

Living, Dining, Family & Foyer: Vitrified tiles

Master Bedroom, Other Bedrooms & Kitchenette: Wooden finished Vitrified tiles

Balcony / deck: Matt finish tiles

Master Bedroom Toilet & Common Toilet: Anti-skid ceramic tiles

WALL DADO

Master Bedroom Toilet & Common Toilet: Ceramic tile cladding up to false ceiling height

KITCHEN

Counter: Provision for modular kitchen

Plumbing & Electrical: Plumbing point provision for water purifier, washing machine. Electrical points provision for water purifier, refrigerator, hob, chimney, mixer/grinder, Microwave Oven & Washing Machine

WINDOWS

UPVC / Anodised Aluminium with mosquito mesh provision

DOORS

Main entry door - to unit: Flush shutter with both side Laminate and architrave

Bedroom doors: Engineered & Treated Hard wood frame & particle board with hdf skin and architrave

Toilet door: Engineered & Treated Hard wood frame, Shutter laminated both sides and architrave

Balcony door: UPVC / Aluminium with bug screen 2 track with one side fixed panel

Shaft door: MS door frame with mild sheet shutter

TOILETS

CP Fittings: Jaquar / Ess Ess / Essco or equivalent

Sanitary fixtures: Floor mounted white EWC (Hindware/Parryware/ Cera or equivalent) with exposed flush tank of standard make including health faucet

3 BHK Comfort: Wall mounted WC with exposed cistern

3 BHK Grand: Wall mounted WC with exposed cistern

Accessories: Towel rod

False Ceiling: Grid ceiling Calcium silicate or equivalent

PAINTING & FINISHES

Accessories: Combination of External texture paint with external grade emulsion

Internal ceilings & common area: Oil Bound Distemper or Emulsion

Unit ceiling: Acrylic emulsion paint

Internal walls, common area & lift Lobby: Emulsion paint

Staircase, utility area and service area: Oil bound distemper

Basement: Cement paint

Unit walls: Acrylic emulsion paint

Steel works: Synthetic enamel paint

Woodwork: Enamel paint

ELECTRICAL

3 Bedroom Apartment: 5 KW

2 Bedroom Apartment: 4 KW

Modular switches: Anchor or equivalent make

DG BACKUP

3 Bedroom Apartment: 2 KW

2 Bedroom Apartment: 1.5 KW

VERTICAL TRANSPORTATION

Lifts: OTIS / Kone or Equivalent

SECURITY SYSTEM & AUTOMATIONS

Provision for Intercom Facility & CCTV as per design

SUSTAINABILITY

Organic waste converter, Ground water recharging Rain water storage, Street light, STP & Solar water heater (provided only for top 2 floors)



Artist's impression

AWARDS FOR 2019-20



Great Place to Work 2020

Brigade was recognised as the Best Place to work in the real estate category for the 10th year in a row by the Great Place To Work Institute

Brigade Group

Brigade Group received 'One of India's Top Challengers' award at the CWAB Awards 2019

Brigade Group received the 'Best Developer of the Year' award at the Times Business Awards 2019

Brigade was awarded as one of the Hot 50 Brands in Bengaluru under the Large Enterprise category at the Bengaluru Brand Summit 2018 by Paul Writer

Brigade Orchards

Won the 'Smart Township Project of The Year' award at the 6th Annual Siliconindia Bengaluru Real Estate Awards 2018

Brigade Exotica

Won the 'Best Residential Project' at the CIA World Construction & Infra Awards 2018

Brigade Cornerstone Utopia

Won the 'Integrated Township Project of the Year' award at the 11th Realty Plus Awards 2019 - South

Brigade Panorama

Won the award for 'Excellence in Delivery' at the 11th Realty Plus Awards 2019 - South

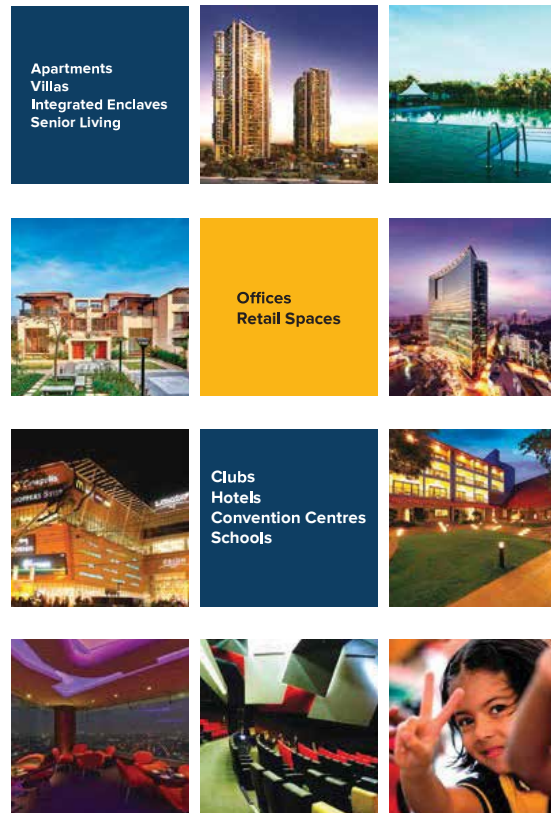
Brigade Palmgrove, Mysuru

Won the 'Premium Villa Project of the Year' award at the NDTV Property Awards 2018

Brigade Mountain View, Mysuru

Won the award for Best Residential Dwellings above 50 units in Mysuru at the CARE Awards 2019

MULTIPLE DOMAINS. SINGLE-MINDED COMMITMENT.



Brigade is one of India's leading developers with over three decades of experience in building positive experiences for all its stakeholders. We have transformed the city skylines of Bengaluru, Mysuru, Mangaluru, Hyderabad, Chennai, Kochi and Ahmedabad with our developments across Residential, Offices, Retail, Hospitality and Education sectors.

Brigade's residential portfolio includes villas, villaments, penthouses, premium residences, luxury apartments, value homes, urban studios, independent living for seniors and mixed-use lifestyle enclaves & townships. Brigade is among the few developers who also enjoy a reputation of developing Grade A commercial properties. We are the license owners of the World Trade Center across South India, while our commercial spaces have top international clients operating out of them. Brigade's retail projects include Orion Mall, Orion Avenue Mall and Orion Uptown Mall. Brigade's hospitality offerings include star hotels, recreational clubs and convention centres, Celebrations Catering & Events, and The Baking Company. Since its inception in 1986, Brigade has completed over 250 buildings amounting to 70 million Sq.ft. of developed space in residential, offices, retail and hospitality sectors across 8 cities.

We have been consistently ranked among the 100 Best Places to Work in India by the Great Place To Work Institute for 10 years in a row. The Group has also been socially responsible and has vastly contributed to society. This responsible attitude and innovative mind-set combined with uncompromising quality of projects over the years, has created a reputed brand.

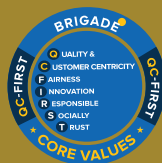
For more information, please visit
www.brigadegroup.com



BRIGADE

Building Positive Experiences

Our Core Values



Founders



Awarded
10 years in a row



To **UPGRADE TO BRIGADE**, reach us on **1800 102 9977** • email: salesenquiry@brigadegroup.com

Brigade Sapphire
Plot No.38,
Hebbal Housing Industrial Area,
Hebbal, Mysuru.

Registered & Corporate Office:
29th & 30th Floor,
WTC Bengaluru@Brigade Gateway Campus,
Dr. Rajkumar Road, Malleswaram-Rajajinagar,
Bengaluru 560055

Dubai:
Brigade Enterprises Ltd.,
708, Atrium Centre, Bank Street, Bur Dubai,
Ph: +971 4 3555504
dubaisales@brigadegroup.com

OFFICES ALSO AT: BENGALURU | CHENNAI | HYDERABAD

RERA Reg. No. PRM/KA/RERA/1268/378/PR/200123/003232 • Available at www.rera.karnataka.gov.in